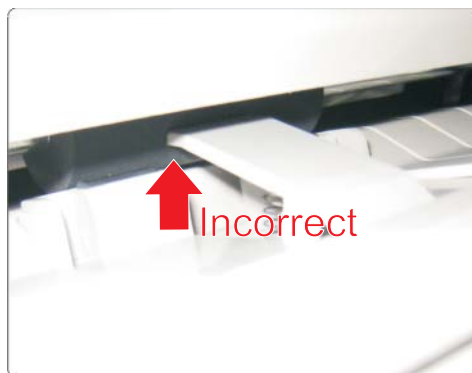
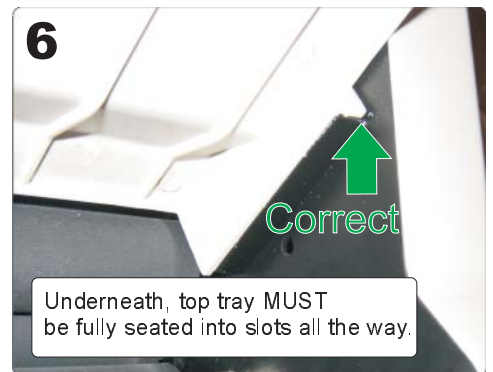
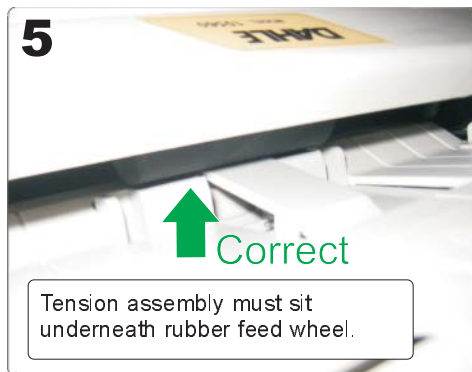
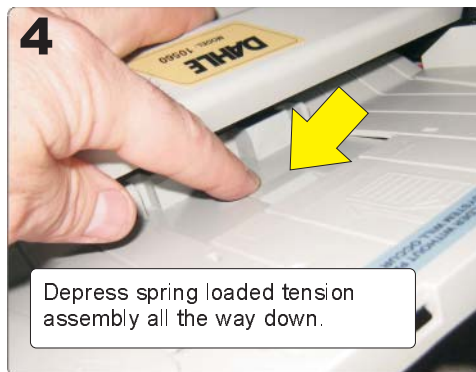


### Trouble Shooting Notes:

When the folder feeds more than one sheet at a time through top feed tray, paper mis-folding or paper jams can occur. This issue is caused by improper installation of the top feed tray housing if the feed tray is not seated properly into place.

Below is the proper procedure for installation of the top feed tray housing.



### SPECIAL NOTE:

**OREweb.ca** highly recommends using "Static Spray" with the Dahle Paper Folder. Static can build up during larger volumes of folding causing paper to stick together when exiting the machine. Static Spray is sprayed on the main roller wheels to eliminate static build up. Contact us or order Static Spray online at: [OREweb.ca](http://OREweb.ca)